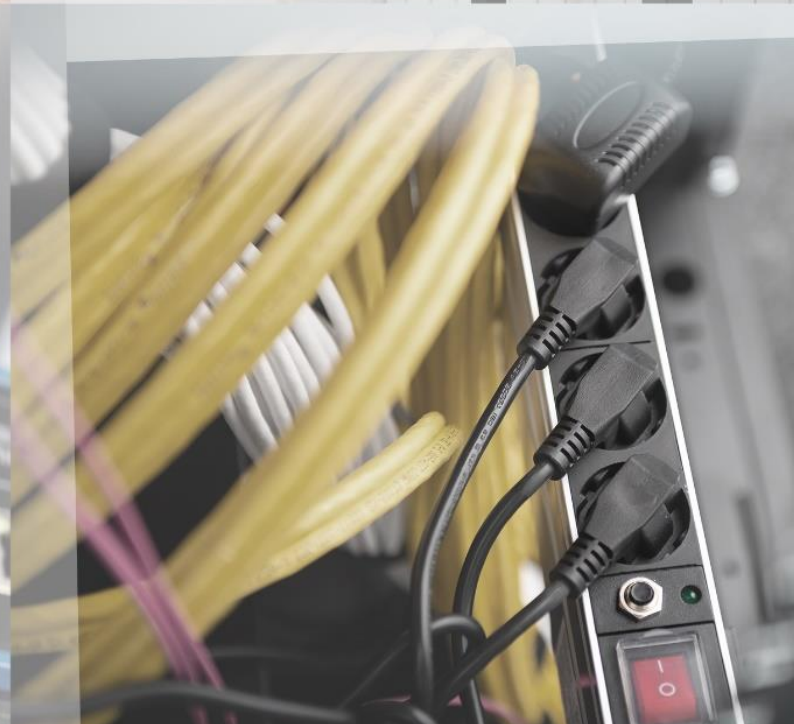




**DIGITUS<sup>®</sup>**  
by ASSMANN



# CONTENT

- Topic: Ergonomic Work Stations ..... 2
- Topic: Desk Frames - New Arrivals ..... 5
- Topic: Input Devices ..... 7
- Topic: USB-C HUBs - New Arrivals ..... 10
- Topic: Wireless Signal Distribution ..... 12
- Topic: HDBaseT Video Solutions ..... 15
- Topic: Power Solutions for Home and Office ..... 18
- Topic: Smart Cameras ..... 19
- Topic: patch cables - 10 pcs per pack ..... 21
- Topic: Structured Cabling - CAT 7 S-FTP ..... 25
- Topic: varioFLEX - a network cabinet that leaves nothing to be desired ..... 26
- Topic: Easy installation or maintenance work - the swiveling network cabinets for wall mounting  
28
- Topic: Shelves inclusive cable management for high load capacities ..... 31
- Topic: Desktop KVM Solutions ..... 33
- Topic: LCD KVM - saving space - extent control ..... 35
- Topic: Secure basic power distribution solutions for devices in 19" Network and Server cabinets 36
- Topic: Secure remote power distribution solutions for your Edge applications ..... 42
- Topic: E-Mobility ..... 44

**Topic:** Ergonomic Work Stations

**Products:**

---

**Nr.:** DA-90451

**EAN:** 4016032486398

**Workstation (monitor, keyboard, mouse) Wall Mount**

Workstation (Monitor, Keyboard, Mouse) Wall Mount 32 inch, 8kg, VESA 75x75/100x100, white/black

- Monitor arm (gas spring) - 45° inclination, 180° swivel range, VESA mount 360° rotation range
- Monitor arm suited for monitors up to 32" and max. weight of 8kg (VESA 75x75, 100x100)
- Mount for keyboard & mouse (double hinged arm) - Size: W 60 x D 17.8cm and handle on the front side



**Link:** [ASSMANN Website](#)

---

**Nr.:** DA-90354

**EAN:** 4016032383161

**Workstation (monitor, keyboard, mouse) Wall Mount**

Workstation (Monitor, Keyboard) Wall Mount 27 inch, 6kg, VESA 100x100, silver

- Universally suitable for all monitors up to 27" with a mounting option in accordance with the VESA standard
- For mounting devices with a screen diagonal of 43cm (17") to 69cm (27") to the wall
- Freely swivels up to 180°



**Link:** [ASSMANN Website](#)

---

**Nr.:** DA-90372

**EAN:** 4016032457442

**Flexible wall-mounted Stand/Sit workstation, single monitor**

Sit-Stand Workstation wall single mount, black, max. load capacity: 1-8kg, max. screen Size: 17"-32"

- Universally suitable for 17" to 32" monitors/TV sets with mounting option according to VESA standard
- Gas pressure springs allow easy height adjustment of the monitor and keyboard
- Load capacity up to 8 kg for monitors and up to 10kg for PCs



**Link:** [ASSMANN Website](#)

---

**Nr.:** DA-90374  
**EAN:** 4016032457435

**Mobile workstation with individual height adjustment**

Mobile Workstation (Monitor Mount, PC Holder), max. 8kg load, 32" screen max., black

- Universally suitable for 17" to 32" monitors/TV sets with mounting option according to VESA standard
- Mobile workstation, comfortable and easy to move
- Flexible height adjustment

**Link:** [ASSMANN Website](#)

---



**Nr.:** DA-90380-1  
**EAN:** 4016032433279

**Ergonomic Workspace Riser**

Height Adjustable Sit-Stand desktop, 95x61x10-50cm, Lower Keyboard and mouse deck

- Create your personal ergonomic workspace at low cost
- You are able to raise your workspace between 10 to 50cm
- Lower deck for mouse and keyboard

**Link:** [ASSMANN Website](#)

---



**Nr.:** DA-90380-2  
**EAN:** 4016032472964

**Ergonomic Workspace Riser**

Height Adjustable Sit-Stand desktop 95x61x10-50cm, Lower Keyboard and mouse deck, white

- Create your personal ergonomic workspace at low cost
- You are able to raise your workspace between 10 to 50cm
- Lower deck for mouse and keyboard

**Link:** [ASSMANN Website](#)

---





**Nr.:** DA-90382  
**EAN:** 4016032446859

**Ergonomic Stand/ Sit Workstation**

Ergonomic Sit-Stand Laptop Workstation, Worktop 79x54cm, max. load 10kg, max. height 40cm

- Create your personal ergonomic workspace virtually everywhere
- You are able to raise your workspace between 2.6 to 40cm
- Immediately usable, no assembly required

**Link:** [ASSMANN Website](#)

---



**Nr.:** DA-90445  
**EAN:** 4016032481874

**Ergonomic Stand/Sit Desk Converter**

Desk converter, 6 heights MDF Board, height: 45-405mm, surface: 67x47cm

- Ultra-slim design - just 4.5cm tall when folded together
- 6 lockable height settings
- Height adjustment using spiral spring: 4.5/21.5/26.5/30.5/36.5/40.5cm

**Link:** [ASSMANN Website](#)

---



**Topic: Desk Frames - New Arrivals****Products:**

-----

**Nr.:** DA-90430 | DA-90431 | DA-90432  
**EAN:** [4016032482048](#) | [4016032482031](#) | [4016032482024](#)

**Electrically Height-Adjustable Table Frame, single motor, 2 levels**

Electric Height Adjustable Desk Frame, Single motor, 2-stages, different colors

- Maximum load capacity of up to 70kg
- Flexible frame - Suitable for tabletops 110-160cm wide and 50-80cm deep
- Convenient electrical height adjustment (without tabletop): 71.5-121.5cm
- Colors: black, white, grey

**Link:** [ASSMANN Website](#)

-----

**Nr.:** DA-90433 | DA-90434 | DA-90435  
**EAN:** [4016032481980](#) | [4016032481997](#) | [4016032482017](#)

**Electrically Height-Adjustable Table Frame, dual motor, 3 levels**

Electric Height Adjustable Desk Frame, Dual motor, 3-stages, different colors

- Maximum load capacity of up to 100kg
- Flexible frame - Suitable for tabletops 110-200cm wide and 60-100cm deep
- Convenient electrical height adjustment (without tabletop): 62-127cm
- Colors: white, black, grey

**Link:** [ASSMANN Website](#)

-----

**Nr.:** DA-90386  
**EAN:** 4016032456445

**Electric height-adjustable stand/ sit desk frame, 90° angle-shaped (L-shaped)**

Electric Height Adjustable Desk Frame, 3-leg height, 124-208 cm, load: 120 kg, white

- Electric height-adjustable desk base, height: 60-125cm, for two tabletops up to 125-140 & 190-210cm, recommended depths: 55-90cm
- Angle-shaped - Can be mounted on both sides (right or left)
- With collision protection and a memory function for 4 height settings

**Link:** [ASSMANN Website](#)

**Nr.:** DA-90392  
**EAN:** 4016032465102

**Electric Height-Adjustable Desk Frame, 120° Corner Design**

Height Adjustable Table Frame, 3-leg 120 degree, black

- Angle shape: 120° corner design
- Three powerful motors for smooth height setting
- Collision protection function can be set to 5 sensitivity level

**Link:** [ASSMANN Website](#)

---

**Nr.:** DA-90422  
**EAN:** 4016032475279

**Ergonomic Stool / Standing Aid, Height-Adjustable with Gas Pressure Spring**

Standing Stool, height-adjustable, black

- Stay fit and mobile even while seated!
- Frameless foam cushion for pleasant seating comfort
- The sturdy base of the chair offers a stable yet flexible sitting/standing experience

**Link:** [ASSMANN Website](#)

---



**Topic: Input Devices**

**Products:**

---

**Nr.:** DA-20160

**EAN:** 4016032482857

**USB mouse with cable, 3 buttons, 1200dpi**

Wired USB Optical Mouse 3D, 1000dpi, black

- Equipped with 3 buttons and scroll wheel for easy operation
- Plug & Play - Immediately ready for use at the workplace after connection
- Optimum DPI setting of 1200 ideal for text or spreadsheet work as well as navigating the Internet

**Link:** [ASSMANN Website](#)

---

**Nr.:** DA-20161

**EAN:** 4016032482864

**Wireless Optical Mouse, 3 buttons, Silent**

Wireless Optical Mouse 3D, 2.4GHz, 1000 dpi, black

- Equipped with the classic buttons and the scroll wheel for easy operation
- Plug & Play - Immediately ready for use at the workplace after connection
- Optimum DPI setting of 1200 ideal for text or spreadsheet work as well as navigating the Internet

**Link:** [ASSMANN Website](#)

---

**Nr.:** DA-20162

**EAN:** 4016032482871

**Wireless Optical Mouse, 6 buttons, 1600dpi**

Wireless Optical Mouse 6D, 2.4GHz, 800/1000/1600dpi, black-grey

- The 6 function keys promote productive work
- Plug & Play - Immediately ready for use after connection
- Adjustable DPI (1600/1200/800) allows high precision for text or spreadsheet work as well as navigating the Internet

**Link:** [ASSMANN Website](#)

---





**Nr.:** DA-20163  
**EAN:** 4016032482888

**Wireless Optical Mouse, 6 buttons, Ergonomic**

Wireless Ergonomic Optical Mouse 6D, 2.4GHz, 800/1000/1600dpi, black-grey

- The 6 function keys promote productive work
- Plug & Play - Immediately ready for use after connection
- Adjustable DPI (1600/1200/800) allows high precision for text or spreadsheet work as well as navigating the Internet

**Link:** [ASSMANN Website](#)

---



**Nr.:** DA-20156  
**EAN:** 4016032475590

**Ergonomic trackball mouse, wireless**

Wireless Ergonomic Optical Trackball Mouse, red 8D (Buttons), 2.4GHz, rechargeable battery, black

- Ergonomic design is easy on your joints and improves natural hand posture
- Reduces arm and wrist movement, prevents fatigue and poor posture
- Dual connectivity: Wirelessly possible via Bluetooth or wireless USB dongle

**Link:** [ASSMANN Website](#)

---



**Nr.:** DA-20157  
**EAN:** 4016032463900

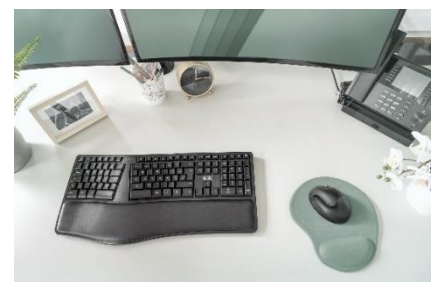
**Ergonomic Keyboard, Wireless, 2.4GHz**

Ergonomic keyboard, wireless German layout, black

- Prevents one-sided strain on hands and joints (RSI)
- Wireless 2.4GHz technology with nano USB receiver
- 18 multimedia keys for quick access to common software and functions

**Link:** [ASSMANN Website](#)

---



**Nr.:** DA-20159  
**EAN:** 4016032475774

**Ultra-Slim Wireless Keyboard, 2.4GHz**

Wireless keyboard, German Layout 2.4GHz, QWERTZ, ABS, grey

- Ultra-slim and modern design
- Wireless 2.4GHz technology with nano USB receiver
- 6 multimedia keys for common software and functions

**Link:** [ASSMANN Website](#)

---

**Nr.:** DA-20155  
**EAN:** 4016032428374

**Ergonomic Vertical Wireless Mouse**

Wireless Ergonomic Optical Mouse 6D (Buttons), 2.4GHz, rechargeable battery, black

- The ergonomic design makes it possible to maintain the natural hand and arm position
- Maintains the natural position of the hand and relieves the joints
- 6 buttons: Left, right, middle scrolling, dpi, forwards, backwards

**Link:** [ASSMANN Website](#)

---



**Topic:** USB-C HUBs - New Arrivals

**Products:**

---

**Nr.:** DA-70245

**EAN:** 4016032485766

**USB-C 4 Port HUB, 2x USB A + 2x USB-C**

USB-C 4 Port HUB 2x USB-A + 2x USB-C Gen2

- Additional 2x USB A 3.1 and 2x USB-C 3.1 Gen2 with up to 10Gbps
- 2x USB A 3.1 with up to 10Gbps
- 2x USB-C 3.1 Gen2 with up to 10Gbps

**Link:** [ASSMANN Website](#)

---

**Nr.:** DA-70246

**EAN:** 4016032485773

**USB-C 4-Port Hub**

USB-C 4 Port HUB 4x USB-C 3.1 Gen1, 5Gbps

- 4x USB-C 3.1 Gen1 with up to 5Gbps
- High-quality aluminum housing in slim design
- Data transfer rate: up to 5Gbps

**Link:** [ASSMANN Website](#)

---

**Nr.:** DA-70242-1

**EAN:** 4016032455653

**USB Type-C™ 4-Port hub (USB 3.0) + PD**

4-Port USB-C HUB + PD 4x USB 3.0, 1x PD Charging, silver

- Extend your notebook by four USB 3.0 ports
- Charge your connected notebook via the USB-C™ port on the hub
- Plug & play - plug in and get started right away, no installation necessary

**Link:** [ASSMANN Website](#)

---



**Nr.:** DA-70255

**EAN:** 4016032430100

**USB Type-C™ 3-Port Hub + Gigabit Ethernet**

3 Port USB 3.0 Type-C Hub with Gigabit Ethernet, 3x USB A/F, 1x USB C/M, 1x RJ45 LAN, Win/Mac OS

- Fast data transmission due to USB 3.0 and gigabit LAN
- Hot swappable, plug & play
- Gigabit data transfer rates of up to 1000Mbps

**Link:** [ASSMANN Website](#)

---



**Topic:** Wireless Signal Distribution

**Landingpage:** [Link](#)

**Products:**

**Nr.:** DS-55314

**EAN:** 4016032460657

**Wireless HDMI® Extender / Splitter Set, 80m**

Wireless HDMI Extender Set, 80m, 5GHz, Splitter function (4 screens max.), Full HD, 1080p

- The set can be extended by up to 4 receiver units (DS-55315) and offers splitter functionality with additional receivers
- Supports point-to-point and multicast (point-to-multipoint) transmission
- Distribute your HDMI® signal on up to 4 TVs/monitors



**Link:** [ASSMANN Website](#)

**Nr.:** DS-55315

**EAN:** 4016032460664

**Receiver unit for Wireless HDMI® / Splitter Extender Set, 80m**

Wireless HDMI Extender Receiver Unit, 5GHz Full HD, 1080p, for splitter function

- Set extension for the Wireless HDMI® Extender Set (DS-55314) to up to 4 receivers
- Supports multicast (point-to-multipoint) transmission for up to 4 receiver units
- IR input for forwarding the remote control signal to the source device



**Link:** [ASSMANN Website](#)

**Nr.:** DS-55317

**EAN:** 4016032478492

**Click & Present Pro - Wireless Collaboration System**

Click & Present - Wireless Collaboration System HDMI, 2x TX, 1x RX

- Share, present and collaborate: The Wireless Presentation & Collaboration System links notebooks and mobile devices wirelessly with a screen or projector (compatible with Windows, macOS, iOS, iPadOS, Android)
- No app or software installation required: Share from computer via HDMI transmitter / Couple tablet & smartphone via WLAN and share via the mobile device's screen synchronization
- Split-screen mode: Up to 4 participants can transfer and display their screen contents on the main monitor (compatible with HDMI dongle, Windows, macOS, iOS)



**Link:** [ASSMANN Website](#)



**Nr.:** DS-55318  
**EAN:** 4016032478744

### Wireless HDMI Extender Set, 50m

Wireless HDMI Extender Set, 50m Dongle, 1 to 1, Full HD

- Multimedia transmission: The HDMI Extender Set from DIGITUS based on radio technology enables wireless transmission of audio and video signals in Full-HD quality (1080p/60Hz)
- No software installation required: To establish the connection, the transmitter and receiver units linked by the manufacturer are simply inserted into the source and receiver devices
- Range: The transmission distance is up to 50m with unobstructed view - With a restricted visual range, the maximum range cannot be determined generally and depends on the specific circumstances where installed



**Link:** [ASSMANN Website](#)

---

**Nr.:** DS-55319  
**EAN:** 4016032478775

### Click & Present Mini - Wireless Presentation System

Wireless Presentation System, 50m Dongle, up 16 to 1, Full HD, mobile screen sharing

- Share and present: The Wireless Presentation System links notebooks and mobile devices wirelessly with a screen or projector (compatible with Windows, macOS, iOS, iPadOS, Android)
- No app or software installation required: Share from computer via HDMI transmitter / Couple tablet & smartphone via WLAN and share via the mobile device's screen synchronization
- Plug, Press & Play: After connecting the HDMI dongle to an HDMI port, it is enough to press a button on the transmitter to start the signal transmission (active transmissions are interrupted)



**Link:** [ASSMANN Website](#)

---

**Nr.:** DS-55320  
**EAN:** 4016032478799

### Wireless HDMI Transmitter for Click & Present Mini (DS-55319)

Wireless HDMI Transmitter Unit for DS-55319 (additional unit)

- Share and present: The HDMI transmitter extends the Wireless Presentation System and is suitable for all devices with an HDMI output (compatible with Windows, macOS)
- No software installation required: To share the computer via HDMI transmitter, the transmitter only needs to be coupled with the receiver unit once
- Plug, Press & Play: After connecting the HDMI dongle to an HDMI port, it is enough to press a button on the transmitter to start the signal transmission (active transmissions are interrupted)



**Link:** [ASSMANN Website](#)

---

**Nr.:** DS-55321  
**EAN:** 4016032478812

### Wireless HDMI KVM Extender Set, 200m

Wireless HDMI KVM Extender Set, 200m, Full HD

- Wireless HDMI signal transmission up to 200m (with unobstructed view)
- Point-to-point connection - 1x transmitter (source) + 1x receiver (output device)
- Supports transmissions resolutions up to Full HD (1080p/60Hz)



**Link:** [ASSMANN Website](#)

---

**Nr.:** DS-55322  
**EAN:** 4016032478911

### Wireless HDMI Transmitter for Click & Present Pro (DS-55317)

Wireless HDMI Transmitter (TX) additional unit for DS-55317

- Share, present and collaborate: The HDMI transmitter extends the Wireless Presentation & Collaboration System Click & Present Pro and is suitable for all devices with an HDMI output (compatible with Windows, macOS)
- No software installation required: To share the computer via HDMI transmitter, the transmitter only needs to be coupled with the receiver unit once
- Multi-user and split-screen support: Up to 30 participants can be connected with the receiver simultaneously and start screen transmission by turns (split-screen with up to 4 participants at the same time)



**Link:** [ASSMANN Website](#)

---

**Topic:** HDBaseT Video Solutions

**Products:**

---

**Nr.:** DS-55512

**EAN:** 4016032480020

**4K HDBaseT™ HDMI KVM Extender Set, 70m**

HDBaseT HDMI KVM Extender, 4K/30Hz, 70m, 10.2Gbps, HDCP 2.2

- Extends the maximum length for HDMI cables to up to 70m (Full HD, 1080p/60Hz) or 40m (UHD, 4K/30Hz) via a simple network cable
- KVM functionality (USB 1.1) for connection to mouse and keyboard
- PoC (Power over Cable) - Only the unit requires an external power adapter

**Link:** [ASSMANN Website](#)

---

**Nr.:** DS-55510

**EAN:** 4016032479307

**4K HDBaseT™ 1x4 HDMI Extender Splitter Set, 150m**

HDBaseT HDMI Extender Splitter Set, 150m, 1x4 EDID, 4K/60Hz, HDCP 2.2, HDR, POC, HDMI 2.0

- Supports HDBaseT™ 1.0 via CAT6A/7/8 up to 100m
- Supports 4K2K/60Hz (4:4:4)
- Maximum transmission distance (UHD 4K2K): 120m

**Link:** [ASSMANN Website](#)

---

**Nr.:** DS-55508

**EAN:** 4016032478942

**4K HDBaseT™ HDMI Extender Set, 150m**

HDBaseT HDMI Extender Set, 150m, 4K/60Hz, 18Gbps, YUV 4:4:4, HDR

- Supports HDBaseT™ 1.0 via CAT6A/7/8 cable up to 100m
- Supports 4K2K/60Hz (4:4:4)
- Maximum transmission distance (UHD 4K2K): 120m

**Link:** [ASSMANN Website](#)

---



**Nr.:** DS-55505  
**EAN:** 4016032472667

**4K HDMI® HDBaseT™ 2.0 KVM Extender Set, 100m**

HDBaseT 2.0 HDMI KVM Extender Set, 4K/60Hz (4:2:0), 6x USB

- Transmit high-resolution multimedia content without a loss of quality and uncompressed over distances of up to 100m
- Saves unnecessary cable relocation and pools multimedia signals along with many other signals in a single network cable
- Forwarding without loss of quality through transmission of uncompressed data



**Link:** [ASSMANN Website](#)

---

**Nr.:** DS-55500  
**EAN:** 4016032429449

**4K HDMI Extender Set, HDBaseT™, 4K/30Hz, 70m**

4K HDMI Extender Set, HDBaseT, UHD 4K\*2K@30Hz, 70m over network cable (Cat 5E, 6, 7)

- Extends the maximum length for HDMI cables to up to 70m whereby only a simple network cable is used between a sender and a receiver unit
- Extends 4K video contents to up to 40m with a CAT 6 cable
- Offers simple and quick distribution for HDMI video signals - position your monitors wherever you wish



**Link:** [ASSMANN Website](#)

---

**Nr.:** DS-55520  
**EAN:** 4016032483670

**4K HDBaseT™ HDMI Extender Set, 70m**

4K HDBaseT Extender Set, 70m, PoC, RS232, IR, black

- Supports HDBaseT™ 1.0 via CAT6/7/8 cable up to 70m
- Supports 4K2K/30Hz (24bit)
- Maximum transmission distance (UHD 4K/30Hz, CAT6 or higher): 40m



**Link:** [ASSMANN Website](#)

---

**Nr.:** DS-55522  
**EAN:** 4016032483694

**4K HDBaseT™ HDMI KVM Extender Set, 150m**

HDBaseT KVM Extender Set, 150m, 4K/60Hz, USB 1.1, PoC, IR, black

- Supports HDBaseT™ 1.0 via CAT6A/7/8 cable up to 100m
- Transmission distance - Full HD (1080p/60Hz): 150m (max.)
- Transmission distance - UHD (4K/60Hz): 120m (max.)

**Link:** [ASSMANN Website](#)

---



**Nr.:** DS-55523  
**EAN:** 4016032483700

**HDMI HDBaseT™ 3.0 Extender Set, 100m**

HDBaseT 3.0 KVM Extender Set, 100m, USB 2.0, PoC, RS232, IR, eARC/ARC, black

- HDBaseT™ 3.0 technology
- HDMI 2.0b, HDCP 2.2
- Uncompressed signal transmission in 4K/60Hz, 4:4:4 at 18GB/s

**Link:** [ASSMANN Website](#)

---





**Topic:** Power Solutions for Home and Office

**Products:**

---

**Nr.:** DA-70623

**EAN:** 4016032474388

### 3-Way Socket Cube with 3 USB Ports

Power Cube 3x safety outlet, 3x USB Type A, 16A, 2.4A (USB), switch, 1.4m power cord

- 3 integrated safety plug sockets with integrated contact protection
- 3 integrated USB ports (USB A) for charging tablets or smartphones
- Separate On/Off switch for the USB connections with LED illumination (function display)

**Link:** [ASSMANN Website](#)

---

**Nr.:** DA-70620

**EAN:** 4016032463917

### Flexible Power Strip, 4-way with 2 USB Ports & Switch

Flexible power strip, 3680W, 250VAC, 50Hz, 4x safety outlet, 16A, 2x USB-A connection, 2.4A

- Angle and position of each socket can be adjusted individually
- Enough room for all types of plugs and power adapters
- 2 integrated USB ports (USB-A) for charging tablets or smartphones

**Link:** [ASSMANN Website](#)

---



**Topic:** Smart Cameras

**Products:**

---

**Nr.:** DN-18602

**EAN:** 4016032478850

**Smart Full HD Outdoor Camera with LED Floodlight, WLAN + Voice Control**  
Wi-Fi Smart Camera Floodlight Camera

- Full HD video resolution 1080p with wide angle of 90°
- Ultra-bright floodlight with 21 LEDs for optimal lighting
- Voice control via Amazon Alexa & Google Assistant possible

**Link:** [ASSMANN Website](#)

---



**Nr.:** DN-18603

**EAN:** 4016032478867

**Smart Full HD PT Indoor Camera with Auto-Tracking, WLAN + Voice Control**  
Smart Wifi Camera(Without Lan port) P/T Indoor

- Full HD video resolution 1080p with wide angle of 100°
- Auto-tracking function (movement tracking)
- Rotatable by 355° (PAN) / Swivel range 90° (TILT)

**Link:** [ASSMANN Website](#)

---



**Nr.:** DN-18650

**EAN:** 4016032478843

**Smart Full HD Doorbell Camera With PIR Motion Sensor, Battery Operation + Voice Control**  
Smart Wi-Fi Camera Doorbell Camera

- Full HD video resolution 1080p with wide angle of 120°
- Supports two-way audio transmission
- Night vision up to 10m

**Link:** [ASSMANN Website](#)

---



**Nr.:** DN-18604

**EAN:** 4016032478874

**Smart Full HD PT Outdoor Camera with Auto-Tracking, Dual LED, WLAN + Voice Control**  
Smart Wifi PTZ Outdoor Camera Support TUYA, Alexa Google home

- Full HD video resolution 1080p with wide angle of 85°
- Auto-tracking function (movement tracking)
- Rotatable by 355° (PAN) / Swivel range 90° (TILT)

**Link:** [ASSMANN Website](#)

---



**Nr.:** DN-7072

**EAN:** 4016032474487

**300 Mbps Wireless Repeater / Access Point, 2.4GHz + USB Charging Port**  
300Mbps wireless repeater 2.4GHz

- Individually extend your home WLAN network
- 2 external, omni-directional WLAN antennas ensure first-class reception for your WiFi devices
- Option of connecting with your router by pressing the WPS button

**Link:** [ASSMANN Website](#)

---

**Nr.:** DN-70543

**EAN:** 4016032316985

**300Mbps USB Wireless Adapter**

Wireless 300N USB 2.0 adapter, 300Mbps Realtek 8192 2T/2R, external Antenna, with WPS

- Boosts your network signal for computers, notebooks, PSPs, Blu-Ray players, and so on
- Antenna enables a reliable network connection
- Fast data transfer rates of up to 300Mbps

**Link:** [ASSMANN Website](#)

---



**Topic:** patch cables - 10 pcs per pack**Products:**


---

<b>Nr.:</b>	DK-1531-005-10	DK-1531-010-10	DK-1531-020-10,	DK-1531-030-10
	DK-1531-050-10			
<b>EAN:</b>	<a href="#">4016032470113</a>	<a href="#">4016032470175</a>	<a href="#">4016032470182</a>	<a href="#">4016032470199</a>
	<a href="#">4016032470205</a>			

**CAT 5e SF/UTP patch cord, 10 pieces**

CAT 5e SF-UTP Patchkabel, Cu, PVC AWG 26/7, 10 pieces, grey, different lengths

- Transparent blue colored plug with metal shielding for easy identification of Category 5e (100MHz)
- Conductor: Copper (Cu)
- PoE ready
- Lengths: 0.5m, 1m, 2m, 3m, 5m

**Link:** [ASSMANN Website](#)


---

**Nr.:** DK-1531-100-5  
**EAN:** 4016032470229

**CAT 5e SF/UTP patch cord, 5 pieces**

CAT 5e SF-UTP patch cord, Cu, PVC AWG 26/7, 10m, 5 pieces, grey

- Transparent blue colored plug with metal shielding for easy identification of Category 5e (100MHz)
- Conductor: Copper (Cu)
- PoE ready

**Link:** [ASSMANN Website](#)


---

<b>Nr.:</b>	DK-1617-0025-10	DK-1617-005-10	DK-1617-010-10	DK-1617-020-10
	DK-1617-030-10	DK-1617-050-10		
<b>EAN:</b>	<a href="#">4016032470571</a>	<a href="#">4016032470588</a>	<a href="#">4016032470595</a>	<a href="#">4016032470601</a>
	<a href="#">4016032470618</a>	<a href="#">4016032470625</a>		

**CAT 6 U/UTP patch cord - LSZH, 10 pieces**

CAT 6 U-UTP patch cord, Cu, LSZH AWG 26/7, 10 pieces, grey, different lengths

- With LSZH (Low Smoke Zero Halogen) sheath for best fire behavior and low smoke emissions.
- Transparent red colored plug for easy identification of Category 6 (250MHz)
- Conductor: Copper (Cu)
- Lengths: 0.25m, 0,5m, 1m, 2m, 3m, 5m

**Link:** [ASSMANN Website](#)

**Nr.:** DK-1617-0025S-10 | DK-1617-005S-10 | DK-1617-010S-10  
**EAN:** [4016032472193](#) | [4016032472209](#) | [4016032472216](#)

**CAT 6 U/UTP slim patch cord, 10 pieces**

CAT 6 U-UTP slim patch cord, Cu, LSZH AWG 28/7, 10 pieces, grey, different lengths

- Small outer diameter of 3.65mm is suitable for flexible use
- With LSZH (low smoke zero halogen) outer sheath for best fire behavior and low smoke emission.
- Transparent red colored connector for easy identification of Category 6 (250MHz)
- Lengths: 0.25m, 0.5m, 1m



**Link:** [ASSMANN Website](#)

<b>Nr.:</b>	DK-1617-A-0025S		DK-1617-A-005S		DK-1617-A-010S		DK-1617-A-015S
	DK-1617-A-020S		DK-1617-A-025S		DK-1617-A-030S		DK-1617-A-050S
	DK-1617-A-100S		DK-1617-A-150S				
<b>EAN:</b>	<a href="#">4016032467823</a>		<a href="#">4016032461999</a>		<a href="#">4016032461715</a>		<a href="#">4016032467830</a>
	<a href="#">4016032461722</a>		<a href="#">4016032467847</a>		<a href="#">4016032461739</a>		<a href="#">4016032461746</a>
	<a href="#">4016032461760</a>		<a href="#">4016032461777</a>				

**CAT 6A U/UTP slim patch cord**

CAT 6A U-UTP slim patch cord, Cu, LSZH AWG 28/7, grey, different lengths

- Small outer diameter of 3.65mm is suitable for flexible use
- With LSZH (low smoke zero halogen) outer sheath for best fire behavior and low smoke emission
- Transparent yellow colored plug for easy identification of Category 6A (500MHz)
- Lengths: 0.25m, 0.5m, 1m, 2.5m, 3m, 2.5m, 3m, 5m, 10m, 15m



**Link:** [ASSMANN Website](#)

**Nr.:** DK-1624-A-010S-10  
**EAN:** [4016032472308](#)

**CAT 6A U/FTP Slim patch cord, 10 pieces**

CAT 6A U-FTP slim patch cord, Cu, LSZH AWG 28/7, 1m, 10 pieces, grey

- Small outer diameter of 4.8mm is suitable for flexible use
- With LSZH (low smoke zero halogen) outer sheath for best fire behavior and low smoke emission
- Transparent yellow colored plug with metal shielding for easy identification of Category 6A (500MHz)



**Link:** [ASSMANN Website](#)



<b>Nr.:</b>	DK-1624-A-0025S	DK-1624-A-005S	DK-1624-A-010S	DK-1624-A-015S
	DK-1624-A-025S	DK-1624-A-030S	DK-1624-A-040S	DK-1624-A-050S
	DK-1624-A-070S	DK-1624-A-100S	DK-1624-A-150S	
<b>EAN:</b>	<a href="#">4016032467922</a>	<a href="#">4016032464839</a>	<a href="#">4016032464846</a>	<a href="#">4016032467946</a>
	<a href="#">4016032469186</a>	<a href="#">4016032464860</a>	<a href="#">4016032468011</a>	<a href="#">4016032464877</a>
	<a href="#">4016032464884</a>	<a href="#">4016032464891</a>	<a href="#">4016032464907</a>	

**CAT 6A U/FTP Slim patch cord**

CAT 6A U-FTP slim patch cord, Cu, LSZH AWG 28/7, grey, different lengths

- Small outer diameter of 4.8mm is suitable for flexible use
- With LSZH (low smoke zero halogen) outer sheath for best fire behavior and low smoke emission
- Transparent yellow colored plug with metal shielding for easy identification of Category 6A (500MHz)
- Lengths: 0.25m, 0.5m, 1m, 1.5m, 2m, 2.5m, 3m, 4m, 5m, 7m, 10m, 15m



**Link:** [ASSMANN Website](#)

<b>Nr.:</b>	DK-1644-0025-10	DK-1644-005-10	DK-1644-050-10
<b>EAN:</b>	<a href="#">4016032441274</a>	<a href="#">4016032441434</a>	<a href="#">4016032441472</a>

**CAT 6 S/FTP patch cord, 10 units**

CAT 6 S-FTP patch cord, Cu, LSZH AWG 27/7, 10 pieces, grey, different lengths

- With LSZH (Low Smoke Zero Halogen) sheath for best fire behavior and low smoke emissions.
- Transparent red colored plug with metal shielding for easy identification of Category 6 (250MHz)
- Conductor: Copper (Cu)
- Lengths: 0.25m, 0.5m, 5m



**Link:** [ASSMANN Website](#)

<b>Nr.:</b>	DK-1644-A-0025-10		DK-1644-A-005-10		DK-1644-A-010-10		DK-1644-A-020-10
	DK-1644-A-030-10		DK-1644-A-050-10				
<b>EAN:</b>	<a href="#">4016032468929</a>		<a href="#">4016032468943</a>		<a href="#">4016032468974</a>		<a href="#">4016032469001</a>
	<a href="#">4016032469018</a>		<a href="#">4016032469025</a>				

**CAT 6A S/FTP patch cord, 10 pieces**

CAT 6A S-FTP patch cord, Cu, LSZH AWG 26/7, 10 pieces, grey, different lengths

- With LSZH (Low Smoke Zero Halogen) sheath for best fire behavior and low smoke emissions.
- Transparent yellow colored plug with metal shielding for easy identification of Category 6A (500MHz)
- Conductor: Copper (Cu)
- Lengths: 0.25m, 0.5m, 1m, 2m, 3m, 5m



**Link:** [ASSMANN Website](#)

---

<b>Nr.:</b>	DK-1844-005-10		DK-1844-010-10
<b>EAN:</b>	<a href="#">4016032471424</a>		<a href="#">4016032471646</a>

**CAT 8.1 S/FTP patch cable, 10 pieces**

CAT 8.1 S-FTP patch cord, Cu, LSZH AWG 24/7, 10 pieces, grey, different lengths

- Reach a bandwidth of up to 2000MHz
- With LSZH (low smoke zero halogen) outer sheath for best fire behavior and low smoke emission
- Transparent green colored metal shielded connector for easy identification of Category 8.1 (2000MHz)
- Lengths: 0.5m, 1m



**Link:** [ASSMANN Website](#)

---

**Topic: Structured Cabling - CAT 7 S-FTP****Products:**

<b>Nr.:</b>	DK-1743-VH-025	DK-1743-VH-050	DK-1743-VH-250	DK-1743-VH-1
	DK-1743-VH-5	DK-1743-VH-10		
<b>EAN:</b>	<a href="#">4016032480778</a>	<a href="#">4016032480785</a>	<a href="#">4016032480792</a>	<a href="#">4016032392101</a>
	<a href="#">4016032353997</a>	<a href="#">4016032300786</a>		

**Cat.7 S/FTP installation cable, simplex, Dca-s1a d1 a1**

CAT 7 S-FTP installation cable, 1200MHz Dca (EN 50575), AWG 23/1, SX, orange, different lengths

- **PROPERTIES:** Cat7 cable with 4x2 AWG 23/1 core diameter 0.57mm twisted pair copper cables (Cu) – 1200MHz bandwidth up to 10Gbit/s 10GBase-T in accordance with IEEE 802.3 – External diameter 7.2mm – Power over Ethernet (PoE, PoE+)
- **QUALITY CHARACTERISTICS:** LAN cable is shielded (S/FTP shielding with PiMF, pairs in metal foil) – Permanent link GHMT certified – Standards: ISO/IEC 11801, IEC 61156-5, DIN EN 50173-1/4, DIN EN 50288-4-1, EN 60332-1-2, EN 60754-1/2, EN 61034-2, EN 50174-2
- **FIRE PROTECTION:** Data cable corresponds to CPR Euro Class BauPVO Dca s1a d1 a1 in accordance with EN 50575 – LSZH halogen-free flame-retardant low smoke – With SFS-PE polyethylene outer sheath (0.52mm thickness) color orange (RAL 2000)
- Lengths: 25m, 50m, 250m, 100m, 500m, 1000m



**Link:** [ASSMANN Website](#)

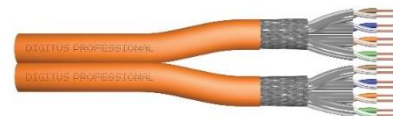
**Nr.:** DK-1743-VH-D-5

**EAN:** 4016032380573

**Cat.7 S/FTP installation cable, 500m, duplex, Dca-s1a d1 a1**

CAT 7 S-FTP installation cable, 1200MHz Dca (EN 50575), AWG 23/1, 500m drum, DX, orange

- **PROPERTIES:** Cat7 cable with 4x2 AWG 23/1 core diameter 0.57mm twisted pair copper cables (Cu) – 1200MHz bandwidth up to 10Gbit/s 10G Base-T in accordance with IEEE 802.3 – External diameter 7.2mm – Power over Ethernet (PoE, PoE+)
- **QUALITY CHARACTERISTICS:** LAN cable is shielded (S/FTP shielding with PiMF, pairs in metal foil) – Permanent link GHMT certified – Standards: ISO/IEC 11801, IEC 61156-5, DIN EN 50173-1/4, DIN EN 50288-4-1, EN 60332-1-2, EN 60754-1/2, EN 61034-2, EN 50174-2
- **FIRE PROTECTION:** Data cable corresponds to CPR Euro Class BauPVO Dca s1a d1 a1 in accordance with EN 50575 – LSZH halogen-free flame-retardant low smoke – With SFS-PE polyethylene outer sheath (0.52mm thickness) color orange (RAL 2000)



**Link:** [ASSMANN Website](#)

**Topic:** varioFLEX - a network cabinet that leaves nothing to be desired

**Products:**

---

**Nr.:** DN-19 42U-8/8-V

**EAN:** 4016032371397

**varioFLEX series - 800x800mm (WxD)**

42U varioFLEX network cabinet, 2031x800x800mm, grey (RAL 7035)

- Maximum stability and flexibility
- High load capacity of 483mm (19") profile rails of up to 1200kg
- Very modular design with changeable 483mm (19") blank panels in roof and base

**Link:** [ASSMANN Website](#)

---

**Nr.:** DN-19 42U-8/10-V

**EAN:** 4016032371243

**varioFLEX series - 800x1000mm (WxD)**

42U varioFLEX network cabinet, 2031x800x1000mm, grey (RAL 7035)

- Maximum stability and flexibility
- High load capacity of 483mm (19") profile rails of up to 1200kg
- Very modular design with changeable 483mm (19") blank panels in roof and base

**Link:** [ASSMANN Website](#)

---

**Nr.:** DN-19 FAN-2-HO

**EAN:** 4016032174240

**Ventilation Unit for variable 483mm (19") installation**

Ventilation unit for 483mm (19") installation 2 fans, thermostat, switch, grey (RAL 7035)

- For installation into 483mm (19") unit

**Link:** [ASSMANN Website](#)

---

**Nr.:** DN-19 FAN-4-HO

**EAN:** 4016032174868

**Ventilation Unit for variable 483mm (19") installation**

Ventilation unit for 483mm (19") installation 4 fans, thermostat, switch, grey (RAL 7035)

- For installation into 483mm (19") unit

**Link:** [ASSMANN Website](#)

---



**Nr.:** DN-19 LIGHT-3  
**EAN:** 4016032361053

### LED Lighting

LED lighting, magnetic two sensor modi, incl. power adapter

- Energy saving and cost effective
- Maximum light power without warming phase
- Long life time

**Link:** [ASSMANN Website](#)

---



**Nr.:** DN-LIGHT  
**EAN:** 4016032460039

### LED lights

LED lighting, compact, magnetic, sensor turnable magnet fixing, incl. power adapter

- Energy and cost saving
- Maximum luminosity without warm-up phase
- Long service life

**Link:** [ASSMANN Website](#)

---



**Nr.:** DN-CT-10M-20  
**EAN:** 4016032338260

### Velcro Tape for structured cabling

Velcro Tape, 20 mm wide for structured cabling, 10m roll, black

- Structure your cabling in an easy and efficient way
- The tape fits close and regularly and doesn't put too much pressure on the cable - perfect for sensitive installations
- Re-usable

**Link:** [ASSMANN Website](#)

---





**Topic:** Easy installation or maintenance work - the swiveling network cabinets for wall mounting

**Products:**

---

**Nr.:** DN-19 07-U-3

**EAN:** 4016032186724

**Wall Mounting Cabinet Unique Series - double sectioned, pivoted**

7U wall mounting cabinet, Unique, 420x600x600mm double sectioned, pivotable, grey (RAL 7035)

- The 19-inch networking housing has 7 rack units for the installation of rack devices such as patch fields, switches, socket strips or shelves - The maximum installation depth is 44cm
- In addition to the lockable side walls, the fully swiveling housing ensures optimal accessibility - A separately available fan module can be mounted on the roof
- The safety glass door has an opening angle of 210° - The door hinge can be switched from the left to the right - All doors and side walls are secured with locks against unauthorized access



**Link:** [ASSMANN Website](#)

---

**Nr.:** DN-19 09-U-3

**EAN:** 4016032186731

**Wall Mounting Cabinet Unique Series - double sectioned, pivoted**

9U wall mounting cabinet, Unique, 509x600x600mm double sectioned, pivotable, grey (RAL 7035)

- The 19-inch networking housing has 9 rack units for the installation of rack devices such as patch fields, switches, socket strips or shelves - The maximum installation depth is 44cm
- In addition to the lockable side walls, the fully swiveling housing ensures optimal accessibility - A separately available fan module can be mounted on the roof
- The safety glass door has an opening angle of 210° - The door hinge can be switched from the left to the right - All doors and side walls are secured with locks against unauthorized access



**Link:** [ASSMANN Website](#)

---

**Nr.:** DN-19 12-U-3  
**EAN:** 4016032186748

#### Wall Mounting Cabinet Unique Series - double sectioned, pivoted

12U wall mounting cabinet, Unique, 643x600x600mm, double sectioned, pivotable, grey (RAL 7035)

- The 19-inch networking housing has 12 rack units for the installation of rack devices such as patch fields, switches, socket strips or shelves - The maximum installation depth is 44cm
- In addition to the lockable side walls, the fully swiveling housing ensures optimal accessibility - A separately available fan module can be mounted on the roof
- The safety glass door has an opening angle of 210° - The door hinge can be switched from the left to the right - All doors and side walls are secured with locks against unauthorized access



**Link:** [ASSMANN Website](#)

---

**Nr.:** DN-19 16-U-3  
**EAN:** 4016032186755

#### Wall Mounting Cabinet Unique Series - double sectioned, pivoted

16U wall mounting cabinet, Unique, 820x600x600mm, double sectioned, pivotable, grey (RAL 7035)

- The 19-inch networking housing has 16 rack units for the installation of rack devices such as patch fields, switches, socket strips or shelves - The maximum installation depth is 44cm
- In addition to the lockable side walls, the fully swiveling housing ensures optimal accessibility - A separately available fan module can be mounted on the roof
- The safety glass door has an opening angle of 210° - The door hinge can be switched from the left to the right - All doors and side walls are secured with locks against unauthorized access



**Link:** [ASSMANN Website](#)

---

**Nr.:** DN-19 20-U-3  
**EAN:** 4016032190820

#### Wall Mounting Cabinet Unique Series - double sectioned, pivoted

20U wall mounting cabinet, Unique, 998x600x600mm, double sectioned, pivotable, grey (RAL 7035)

- The 19-inch networking housing has 20 rack units for the installation of rack devices such as patch fields, switches, socket strips or shelves - The maximum installation depth is 44cm
- In addition to the lockable side walls, the fully swiveling housing ensures optimal accessibility - A separately available fan module can be mounted on the roof
- The safety glass door has an opening angle of 210° - The door hinge can be switched from the left to the right - All doors and side walls are secured with locks against unauthorized access



**Link:** [ASSMANN Website](#)

---

**Nr.:** DN-LIGHT  
**EAN:** 4016032460039

**LED lights**

LED lighting, compact, magnetic, sensor turnable magnet fixing, incl. power adapter

- Energy and cost saving
- Maximum luminosity without warm-up phase
- Long service life

**Link:** [ASSMANN Website](#)

---



**Topic:** Shelves inclusive cable management for high load capacities

**Products:**

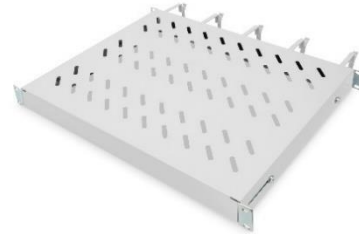
**Nr.:** DN-97680 | DN-97681  
**EAN:** [4016032483465](#) | [4016032483489](#)

**Shelf with cable management**

1U fixed shelf for 600mm depth cabinets incl. cable management, different colors

- Cable management brackets and cable feedthroughs on the front side
- Colors: grey, black

**Link:** [ASSMANN Website](#)



**Nr.:** DN-97682 | DN-97683  
**EAN:** [4016032483496](#) | [4016032483502](#)

**Shelf with cable management**

1U fixed shelf for 800mm depth cabinets incl. cable management, different colors

- Cable management brackets and cable feedthroughs on the front side
- Colors: grey, black

**Link:** [ASSMANN Website](#)



**Nr.:** DN-97684 | DN-97685  
**EAN:** [4016032483519](#) | [4016032483526](#)

**Shelf with cable management**

1U fixed shelf for 1000mm depth cabinets incl. cable management, different colors

- Cable management brackets and cable feedthroughs on the front side
- Colors: grey, black

**Link:** [ASSMANN Website](#)



**Nr.:** DN-19 SRV-26U-1  
**EAN:** 4016032331339

**Server Rack Unique Series - 600x1000mm (WxD)**

26U server rack, Unique, 1340x600x1000mm, perforated steel doors, grey (RAL 7035)

- Special roof construction for fan unit, incl. perforated cover
- Lock system with pivot lever on front- and rear door (incl. profile half cylinder lock)
- Sliding cable entry with rubber sealing on the top and base

**Link:** [ASSMANN Website](#)



**Nr.:** DN-19 32U-6/6-D

**EAN:** 4016032336457

**Network Rack Dynamic Basic Series - 600x600mm (WxD)**

32U network rack, Dynamic Basic 1590x600x600mm, grey (RAL 7035)

- Roof is prepared for fan units (punched out entries)
- Lockable pivot lever on front door
- Base with punched out cable entry, covered with screwed metal plate

**Link:** [ASSMANN Website](#)

---



**Nr.:** DN-19 36U-6/8-1

**EAN:** 4016032332312

**Network Rack Unique Series - 600x800mm (WxD)**

36U network rack, Unique 1787x600x800mm, grey (RAL 7035)

- Special roof construction for fan unit with added lid which can be unmounted
- Lock system with pivot lever on front door (ready for profile half cylinder; adapter included)
- Sliding cable entry with rubber sealing on the base

**Link:** [ASSMANN Website](#)

---



**Nr.:** DN-19 SRV-42U-8-B

**EAN:** 4016032331766

**Server Rack Unique Series - 800x1000mm (WxD)**

42U server rack, Unique, 2050x800x1000mm perforated steel doors, black (RAL 9005)

- Special roof construction for fan unit, incl. perforated cover
- Lock system with pivot lever on front- and rear door (incl. profile half cylinder lock)
- Sliding cable entry with rubber sealing on the top and base

**Link:** [ASSMANN Website](#)

---



**Topic:** Desktop KVM Solutions

**Products:**

---

**Nr.:** DS- 12850

**EAN:** 4016032466833

**KVM Switch, 2-Port, 4K60Hz, 2x DP in, 1 x DP/HDMI out**

KVM Switch, 2x1 DP, DP/HDMI Out, USB 4Kx2K@60Hz

- Use a monitor, a mouse and a keyboard to operate two computers
- USB ports for mouse and keyboard
- Audio connections for microphone/speaker

**Link:** [ASSMANN Website](#)

---

**Nr.:** DS-12880

**EAN:** 4016032468639

**KVM Switch, 4 Port, Single Display, 4K, HDMI®**

Desktop HDMI KVM Switch

- Use one monitor, a mouse and keyboard to operate 4 computers with single display
- Supports a maximum UHD resolution of 4K/30Hz + FreeSync
- USB ports for mouse and keyboard

**Link:** [ASSMANN Website](#)

---

**Nr.:** DS-12901

**EAN:** 4016032479987

**KVM Switch, 2 Port, 4K30Hz, USB-C/USB/HDMI in, HDMI out, Network**

2port Type C KVM with Network Port

- Use one monitor, mouse and keyboard to operate two computers
- Support 1x USB-C™ notebook computer (incl. MacBook)
- Provide LAN connection to USB-C™ notebook computer via USB-C™ cable

**Link:** [ASSMANN Website](#)

---





**Nr.:** DS-23300-2  
**EAN:** 4016032429999

### USB-PS/2 Combo-KVM Switch

16-port Combo-KVM switch, 1 user, 16 PCs, IP function module slot

- Controls several PCs with one PS/2 or US B keyboard, one PS/2 or USB mouse, and one monitor
- Extension via cascading possible
- Emulates a keyboard on each PC to allow your computers to boot normally without a keyboard error



**Link:** [ASSMANN Website](#)

---

**Nr.:** AK-330107-010-S | AK-330107-030-S | AK-330107-050-S  
**EAN:** [4016032290940](#) | [4016032290964](#) | [4016032290971](#)

### HDMI High Speed with Ethernet Connection Cable

HDMI High Speed connection cable, type A M/M, 1.0m, Ultra HD 60p, gold, black, different lengths

- Supports UHD up to 4K/60Hz
- Supports 3D signal transmission
- Supports ARC (bidirectional audio transmission) - Use a microphone and speakers via a cable
- Lengths: 1m, 3m, 5m



**Link:** [ASSMANN Website](#)

---

**Topic:** LCD KVM - saving space - extent control

**Products:**

---

**Nr.:** DS-72210-3GE | DS-72210-3US | DS-72210-3FR  
**EAN:** [4016032449317](#) | [4016032449539](#) | [4016032449553](#)

**Modular console with 17" TFT (43.2cm), 16-port KVM & Touchpad**

Modularized 43.2cm (17") TFT console with 16-port KVM, black (RAL 9005), different keyboards

- Modular console with 17" TFT (43.2cm), 16-port KVM & Touchpad
- Flexible configuration depending on area of application
- Space-saving casing with 1U design height
- Keyboard Layouts: GER, US, FR



**Link:** [ASSMANN Website](#)

---

**Nr.:** DS-72211-3GE  
**EAN:** 4016032449362

**Modular console with 19" TFT (48.3cm), 16-port KVM & Touchpad, german keyboard**

Modularized 48,3cm (19") TFT console with 16-port KVM, DE keyboard, black (RAL 9005)

- Modular console with 19" TFT (48,3cm), 16-port KVM & Touchpad, german keyboard
- Flexible configuration depending on area of application
- Space-saving casing with 1U design height



**Link:** [ASSMANN Website](#)

---

**Nr.:** DS-72210-2GE  
**EAN:** 4016032449300

**DIGITUS Modular console with 17" TFT (43.2cm), 8-port KVM & Touchpad, german keyboard**

Modularized 43.2cm (17") TFT console with 8-port KVM, German keyboard, black (RAL 9005)

- Modular console with 17" TFT (43.2cm), 8-port KVM & Touchpad, german keyboard
- Flexible configuration depending on area of application
- Space-saving casing with 1U design height



**Link:** [ASSMANN Website](#)

**Topic:** Secure basic power distribution solutions for devices in 19" Network and Server cabinets

**Products:**

---

**Nr.:** DN-95426

**EAN:** 4016032483472

**Socket strip with aluminum profile, 12-way, 2m cable safety plug**

1U Aluminum PDU, rackmountable, 12x C13 16A, 230VAC, 50/60Hz, Safety plug

- Perfect current distribution for your network and IT rack
- Compact construction, 19" 1U housing
- The jacks offer optimal space management and easy access



**Link:** [ASSMANN Website](#)

---

**Nr.:** DN-95427

**EAN:** 4016032483533

**Socket Strip with Aluminum Profile, 10-way, 2m cable IEC C20 plug**

1U Aluminum PDU, rackmountable, 8x C13, 2x C19 16A, 230VAC, 50/60Hz, IEC C20 plug

- Perfect current distribution for your network and IT rack
- Optimal current distribution for connection to a UPS (IEC-60320 C20 input connector)
- The jacks offer optimal space management and easy access



**Link:** [ASSMANN Website](#)

---

**Nr.:** DN-95428

**EAN:** 4016032483540

**Socket Strip with Aluminum Profile, 8-way safety socket, 2m cable, IEC C20 plug**

1U Aluminum PDU, rackmountable, 8x Safety outlet 16A, 230VAC, 50/60Hz, IEC C20 plug

- Perfect current distribution for your network and IT rack
- Compact construction, 19" 1U housing
- Optimal current distribution for connection to a UPS (IEC-60320 C20 input connector)



**Link:** [ASSMANN Website](#)

---

**Nr.:** DN-95429  
**EAN:** 4016032483557

**Socket Strip with Aluminum Profile, 9-way, IEC C14 input**

1U Aluminum PDU, rackmountable, 9x C13 10A, 230VAC, 50/60Hz, IEC C14 inlet, 10A Fuse

- Perfect current distribution for connection to a UPS (IEC-60320 C14 input)
- Compact construction, 19" 1U housing
- 10A input fuse protects the PDU and the connected consumers against excess voltage.



**Link:** [ASSMANN Website](#)

---

**Nr.:** DN-95430  
**EAN:** 4016032483564

**Socket Strip with Aluminum Profile, 9-way, IEC C20 input**

1U Aluminum PDU, rackmountable, 7x C13, 2x C19 16A, 230VAC, 50/60Hz, IEC C20 inlet

- Perfect current distribution for your network and IT rack
- Optimal current distribution for connection to a UPS (IEC-60320 C20 input connector)
- The jacks offer optimal space management and easy access



**Link:** [ASSMANN Website](#)

---

**Nr.:** DN-95431  
**EAN:** 4016032483571

**Socket strip with aluminum profile, 7 safety sockets, 2m cable with surge protection**

1U Aluminum PDU, rackmountable, 7x Safety outlet 16A, 230VAC, 50/60Hz, Overvoltage protection

- Perfect current distribution for your network and IT rack.
- Integrated surge protection protects connected users from overvoltage.
- Jacks are rotated by up to 35°, which offers optimal space management and easy access



**Link:** [ASSMANN Website](#)

---

**Nr.:** DN-95432  
**EAN:** 4016032483588

**Socket strip with aluminum profile and surge protection, integrated line filter, 6 safety sockets, 2m cable safety plug**

1U Aluminum PDU, rackmountable, 6x Safety outlet 16A, 230VAC, 50/60Hz, Overvoltage protection

- Perfect current distribution for your network and IT rack
- Integrated line filter and surge protection module protect the connected consumers against disruptions from the grid
- Jacks are rotated by up to 35°, which offers optimal space management and easy access



**Link:** [ASSMANN Website](#)

---

**Nr.:** DN-95433  
**EAN:** 4016032483595

**Socket strip with aluminum profile and switch, surge protection, integrated line filter, 5-way safety sockets, 2m cable safety plug**

1U Aluminum PDU, rackmountable, 5x Safety outlet 16A, 230VAC, 50/60Hz, overvoltage, Net filter, Switch

- Perfect current distribution for your network and IT rack
- The illuminated switch is protected against accidentally being switched off
- Integrated line filter and surge protection module protect the connected consumers against disruptions from the grid



**Link:** [ASSMANN Website](#)

---

**Nr.:** DN-95434  
**EAN:** 4016032483601

**Socket strip with aluminum profile, 12-way safety sockets, 2m cable safety plug**

1U Aluminum PDU, rackmountable, 12x Safety outlet 16A, 230VAC, 50/60Hz, 2m cable

- Perfect current distribution for your network and IT rack
- Jacks are rotated by up to 35°, which offers optimal space management and easy access



**Link:** [ASSMANN Website](#)

---

**Nr.:** DN-95435  
**EAN:** 4016032483618

**Socket strip with aluminum profile with switch and surge protection, 12-way safety sockets, 2m cable safety plug**

1U Aluminum PDU, rackmountable, 12x Safety outlet 16A, 230VAC, 50/60Hz, overvoltage, Switch

- Perfect current distribution for your network and IT rack
- The illuminated switch is protected against accidentally being switched off
- Integrated surge protection protects connected users from overvoltage.



**Link:** [ASSMANN Website](#)

---

**Nr.:** DN-95418-FR  
**EAN:** 4016032482000

**10" socket strip with aluminum profile, 4-way CEE 7/5 sockets**

1U Aluminum PDU, 254mm (10") rack mount, 4x CEE 7/5 outlet, 16A, 4000W, 250VAC, 50/60Hz

- Perfect current distribution for your network and IT rack
- Compact construction, 10" 1U housing
- Jacks are rotated by up to 35°, which offers optimal space management and easy access



**Link:** [ASSMANN Website](#)

---

**Nr.:** DN-95407-FR  
**EAN:** 4016032481966

**Socket strip with aluminum profile and switch, 7-way CEE 7/5 sockets, 2m cable with surge protection and switch**

1U Aluminum PDU, rackmountable, 7x CEE 7/5 16A Plug, 250VAC, 50/60Hz, switch, surge Protection

- Perfect current distribution for your network and IT rack
- Integrated surge protection protects connected users from overvoltage.
- Jacks are rotated by up to 35°, which offers optimal space management and easy access



**Link:** [ASSMANN Website](#)

---



**Nr.:** DN-95410-IT  
**EAN:** 4016032483861

**Socket strip with aluminum profile and back-up fuse, 8-way Italian output, 2m cable IEC C14 plug**  
 1U Aluminum PDU, 8x Italian outlets, Pre-fuse 10A Plug, 250VAC, 50/60Hz, IEC C14 plug

- Perfect power source for your 482.6mm (19") housing
- Jacks are rotated by up to 35°, which offers optimal space management and easy access



**Link:** [ASSMANN Website](#)

---

**Nr.:** DN-95403-IT  
**EAN:** 4016032483878

**Socket strip with aluminum profile and surge protection, 7-way Italian output, 2m cable Italian plug**  
 1U Aluminum PDU, 7x Italian outlet 16A, 4000W, 250VAC 50/60Hz, overload protection

- Perfect power source for your 482.6mm (19") housing
- Jacks are rotated by up to 35°, which offers optimal space management and easy access
- Integrated surge protection ensures maximum safety



**Link:** [ASSMANN Website](#)

---

**Nr.:** DN-95412-IT  
**EAN:** 4016032483885

**Socket strip with aluminum profile and surge protection, integrated line filter, 7-way Italian socket, 2m cable Italian plug**  
 Aluminium PDU, 7x Italian outlet, Frequency filter 16A, 4000W, 250VAC 50/60Hz, 2m

- Perfect current distribution for your network and IT rack
- Integrated line filter and surge protection module protect the connected consumers against disruptions from the grid
- Jacks are rotated by up to 35°, which offers optimal space management and easy access



**Link:** [ASSMANN Website](#)

---

**Nr.:** DN-95402-1-IT | DN-95402-1-FR  
**EAN:** [4016032483892](#) | [4016032481959](#)

**Socket strip with aluminum profile and switch, 8-way Italian output, 2m cable Italian plug**  
1U Aluminum PDU, 8x Italian outlet 16A, 4000W, 250VAC 50/60Hz, switch

- Perfect power source for your 482.6mm (19") housing
- Jacks are rotated by up to 35°, which offers optimal space management and easy access
- The illuminated switch is protected against accidentally being switched off



**Link:** [ASSMANN Website](#)

---

**Topic:** Secure remote power distribution solutions for your Edge applications

**Products:**

---

**Nr.:** DN-95628

**EAN:** 4016032473374

**Smart PDU, Outlet monitored, 1-phase, 16A, 16x C13**

Outlet monitored PDU, vertical, 16A, 16x C13, 3m cable, IEC309 16A plug

- Supports remote access via web, SNMP or Telnet
- Monitoring of input and output values
- Configurable system with user-defined threshold value setting

**Link:** [ASSMANN Website](#)

---

**Nr.:** DN-95634

**EAN:** 4016032473367

**Smart PDU, Outlet Monitored & Switched, 1-phase, 16A, 18x C13, 6x C19**

Outlet monitored & switch PDU, Vertical 18x C13 & 6x C19, 3m, IEC60309 16A plug

- Supports remote access via web, SNMP or Telnet
- Monitoring of input and output values and switching of outlets possible
- Configurable system with user-defined threshold value setting

**Link:** [ASSMANN Website](#)

---

**Nr.:** DN-95632

**EAN:** 4016032473343

**Smart PDU, Outlet Monitored & Switched, 1-phase, 32A, 20x C13, 4x C19**

Outlet monitored & switch PDU, Vertical 32A, 20x C13 & 4x C19, 3m, IEC60309 32A plug

- Supports remote access via web, SNMP or Telnet
- Monitoring of input and output values and switching of outlets possible
- Configurable system with user-defined threshold value setting

**Link:** [ASSMANN Website](#)

---



**Nr.:** DN-95641  
**EAN:** 4016032481621

**Smart PDU, input monitored, input 3x 16A, outputs 36x C13, 6x C19**

Inlet monitored PDU, 3Ph, 16A, 36x C13, 6x C19, 3m cable, IEC60309 16A plug

- Monitors various parameters with defined thresholds and alarm tools
- Various measurements enable early detection of potential outages.
- Up to five PDUs can be accessed with one IP connection; this makes simple and economical installation in your network possible.

**Link:** [ASSMANN Website](#)

---

**Nr.:** DN-95642  
**EAN:** 4016032481638

**Smart PDU, input monitored, input 3x 32A, outputs 30x C13, 12x C19**

Inlet monitored PDU, 3Ph, 32A, 30x C13, 12x C19, 6x 16A, Circuit breaker, 3m cable, IEC309 3x 32A plug

- Monitors various parameters with defined thresholds and alarm tools
- Various measurements enable early detection of potential outages
- Up to five PDUs can be accessed with one IP connection; this makes simple and economical installation in your network possible.

**Link:** [ASSMANN Website](#)

---

**Nr.:** DN-95643  
**EAN:** 4016032481645

**Smart PDU, output monitored & switched, input 1x 16A, outputs 20x C13, 4x C19**

Outlet monitored & switch.

- Monitors various parameters with defined thresholds and alarm tools
- Controls and manages individual outputs or groups
- Various measurements enable early detection of potential outages.

**Link:** [ASSMANN Website](#)

---



**Topic:** E-Mobility

**Products:**

---

**Nr.:** DK-1P16-A-050

**EAN:** 4016032481560

### EV charger for household socket

EV charger, 5m, 230 V, Type F 7/4 to EV Type 2 Adjustable charging power: 1.8/2.3/2.8/3.7kW

- The portable EV charger is suitable for charging at home as well as on the go, if no wallbox or charging station is available - An in-cable control box (ICCB) is also designated as an emergency charging cable
- Compatible with electric vehicles (EV) and plug-in hybrid vehicles (PHEV) that have a CCS or Type 2 charging connection and can be charged with alternating current
- The charger complies with protection class IP55 and is suitable for indoor and outdoor areas - Including supply line, the connection cable with type 2 plug (IEC 62196-2) has a length of 5m



**Link:** [ASSMANN Website](#)

---

**Nr.:** DN-3P16-050

**EAN:** 4016032482376

### Wall Box 3-phase 11kW with 5m Type2 charging cable

Wall-Box 3-Phase 11kW with 5m standard Charger cable

- With the wall charging station, DIGITUS offers a stationary charging solution for private households and companies that want to charge their electric cars on site (parking lot, parking space, garage, carport...)
- The charger is designed for a three-phase power connection with an input voltage of 400 V and supports charging operations up to 11kW with 16A (installation by qualified electrician required)
- Compatible with electric vehicles (EV) and plug-in hybrids (PHEV) that have a CCS or Type 2 charging connection and can be charged with alternating current



**Link:** [ASSMANN Website](#)

---

**Nr.:** DK-1P32-050 | DK-1P32-075  
**EAN:** [4016032481393](#) | [4016032481409](#)

### EV charging cable, type 2 to type 2

EV charging - Single Phase, 230V, 32A, Type 2 to Type 2 Standard Charger cable, different lengths

- The EV charging cable from DIGITUS is compatible with all electric vehicles (EV) and plug-in hybrid vehicles (PHEV) that have a CCS or Type 2 charging connection and can be charged with alternating current
- Single-phase charging cables for max. 7.4kW/32A are generally used for charging a hybrid vehicle at home – Short cables are ideal if charging is always carried out at the same charging point and the length is sufficient
- For charging outdoors, the charging cable complies with protection class IP55 (water jet-proof), which means that a secure connection is possible between charging station and charging socket (charging inlet)
- Lengths: 5m, 7.5m



**Link:** [ASSMANN Website](#)

---

**Nr.:** DK-1P32-S-050 | DK-1P32-S-075  
**EAN:** [4016032481478](#) | [4016032481485](#)

### Spiral EV charging cable, 5m, type 2 to type 2

EV charging - Single Phase, 230V, 32A, 5m, Type 2 to Type 2 Spiral charger cable, different lengths

- Easy plug and play in home wall box and also in public car charging stations
- Compact and Easy to carry - lightweight and space-saving cable, easy to store in car boot or hang it in garage
- Safety and durability - high quality copper cable and TPU material as outer jacket along with IP55 provides maximum protection for your EV charger and your car
- Lengths: 5m, 7.5m



**Link:** [ASSMANN Website](#)

---



**Nr.:** DK-3P16-050 | DK-3P16-075 | DK-3P16-100  
**EAN:** [4016032481423](#) | [4016032481430](#) | [4016032481447](#)

### EV charging cable, type 2 to type 2

EV charging - Three Phase, 400V, 16A, Type 2 to Type 2 Standard Charger cable, different lengths

- The EV charging cable from DIGITUS is compatible with all electric vehicles (EV) and plug-in hybrid vehicles (PHEV) that have a CCS or Type 2 charging connection and can be charged with alternating current
- Three-phase charging cables for max. 11kW/16A are generally used at home for charging overnight – Short cables are ideal if charging is always carried out at the same charging point and the length is sufficient
- For charging outdoors, the charging cable complies with protection class IP55 (water jet-proof), which means that a secure connection is possible between charging station and charging socket (charging inlet)
- Lengths: 5m, 7.5m, 10m



**Link:** [ASSMANN Website](#)

**Nr.:** DK-3P16-S-050 | DK-3P16-S-075 | DK-3P16-S-100  
**EAN:** [4016032481508](#) | [4016032481515](#) | [4016032481522](#)

### Spiral EV charging cable, type 2 to type 2

EV charging - Three Phase, 400V, 16A, Type 2 to Type 2 Spiral charger cable, different lengths

- Easy plug and play in home wall box and also in public car charging stations
- Compact and easy to carry - lightweight and space-saving cable, easy to store in car boot or hang it in garage
- Safety and durability - high quality copper cable and TPU material as outer jacket along with IP55 provides maximum protection for your EV charger and your car
- Lengths: 5m, 7.5m, 10m



**Link:** [ASSMANN Website](#)

**Nr.:** DK-3P32-050 | DK-3P32-075 | DK-3P32-100  
**EAN:** [4016032481454](#) | [4016032481690](#) | [4016032481461](#)

### EV charging cable, type 2 to type 2

EV charging - Three Phase, 400V, 32A, Type 2 to Type 2 Standard Charger cable, different lengths

- Easy plug and play in home wall box and also in public car charging stations
- Easy to carry - lightweight and flexible cable, easy to store in car boot or hang it in garage
- Safety and durability - high quality copper cable and TPU material as outer jacket along with IP55 provides maximum protection for your EV charger and your car
- Lengths: 5m, 7.5m, 10m



**Link:** [ASSMANN Website](#)

---

**Nr.:** DK-3P32-S-050 | DK-3P32-S-075  
**EAN:** [4016032481539](#) | [4016032481546](#)

### Spiral EV charging cable, type 2 to type 2

EV charging - Three Phase, 400V, 32A, Type 2 to Type 2 Spiral charger cable, different lengths

- The EV charging cable from DIGITUS is compatible with all electric vehicles (EV) and plug-in hybrid vehicles (PHEV) that have a CCS or Type 2 charging connection and can be charged with alternating current
- Three-phase charging cables for max. 22kW/32A are compatible with all common alternating current charging stations – Short cables are ideal if charging is always carried out at the same charging point and the length is sufficient
- For charging outdoors, the charging cable complies with protection class IP55 (water jet-proof), which means that a secure connection is possible between charging station and charging socket (charging inlet)
- Lengths: 5m, 7.5m



**Link:** [ASSMANN Website](#)

---